

HAWAII FISHING REGULATIONS

January 2000





Benjamin J. Cayetano, Governor

BOARD OF LAND AND NATURAL RESOURCES

Timothy E. Johns, Chairperson

Members

Kathryn W. Inouye William Kennison

Russell S. Kokubun Colbert M. Matsumoto

Lynn P. McCrory

Department Deputy

Janet E. Kawelo

DIVISION OF AQUATIC RESOURCES
Department of Land and Natural Resources
Kalanimoku Building
1151 Punchbowl Street, Room 330
Honolulu, Hawaii 96813

CONTENTS

Regulated species	
Marine	4
Freshwater	12
How to measure	14
Regulated fishing areas	
Oahu	16
Hawaii	24
Kauai	35
Maui	38
Molokai	40
Lanai	41
Other areas	42
Gear restrictions	44
Special provisions, licenses	45
Commercial fishing	46
Bottom fishing	47
Northwestern Hawaiian Islands (NWHI)	51
Fish Aggregating Devices (FADs)	52
DAR offices	54
To report violations	55

WHAT'S NEW IN THIS REVISION

Hanauma Bay MLCD, Oahu: Fish feeding prohibited; personal safety devices limited to knives only (p. 16).

West Hawaii Fishery Management Area: Aquarium collecting and fish feeding prohibited in nine new Fish Replenishment Areas along West Hawaii shoreline (p. 32).

This information is presented to acquaint sport and commercial fishermen with State laws and rules pertaining to fishing in Hawaii. It is not to be used as a legal document. Failure to include complete statutes or administrative rules in this summary does not relieve persons from abiding by those statutes and rules. Any discrepancies between this summary and the statutes or rules from which it was prepared will be enforced and adjudicated according to the official statutes and rules in effect on the date the activity took place. The full text of the statutes and rules is available for review at most public libraries in the State and at DAR and DOCARE offices.

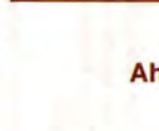




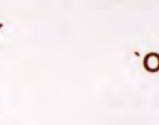
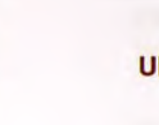


The provisions apply to all areas of the State, unless exempted or modified for certain specific management areas. No license is required for recreational saltwater fishing. A Freshwater Game Fishing License is required for the taking of certain freshwater fishes.

Fishermen are advised that many marine shoreline and freshwater areas of the State are private property, and that permission of the landowners is required for access. This publication does not imply or endorse the public's right to enter into or fish in such areas.

If questions arise concerning these regulations, please contact the nearest office of the Division of Aquatic Resources (DAR) or the Division of Conservation and Resources Enforcement (DOCARE).

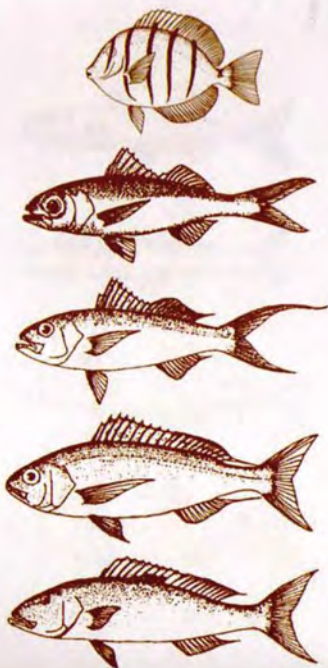
This information is current as of the date printed on the cover, and subject to change. No part of this publication may be reproduced for commercial or other non-educational purposes.

Illustrations: Division of Aquatic Resources, National Oceanic and Atmospheric Administration, Waikiki Aquarium

Species	Season	Minimum Size	Bag Limit
 Ahi	Open	3 pounds (sale)	None
 Aholehole	Open	5 inches (spearing/sale)	None
 Ama`ama (striped mullet)	Closed December - February	7 inches (spearing/sale)	None
 Awa	Open	9 inches (spearing/sale)	None
 Moi & Moi-li`i	Closed June - August	7 inches	15
 O`io	Open	9 inches (spearing/sale)	None
 Uhu	Open	1 pound (spearing/sale)	None
 Ulua & Papio (all species)	Open	7 inches (home consumption) 1 pound (spearing/sale)	20 (total all species, home consumption)
 Weke & Oama	Open	7 inches (spearing/sale)	50 oama (oama are weke under 7")



Species	Season	Minimum Size	Bag Limit
Kumu	Open	7 inches (spearing/sale)	None
Moano	Open	7 inches (spearing/sale)	None
Kala except umaumalei (<i>Naso lituratus</i>)	Open	9 inches (spearing/sale)	None
Opelu kala	Open	9 inches (spearing/sale)	None



Manini	Open	5 inches (spearing/sale)	None
Ehu	Open See additional bottomfishing regulations, p. 44	None	5 (total onaga and ehu, applies to non-commercial fishing only)
Onaga	Open See additional bottomfishing regulations, p. 44	1 pound (sale)	5 (total onaga and ehu, applies to non-commercial fishing only)
Opakapaka	Open See additional bottomfishing regulations, p. 44	1 pound (sale)	None
Uku	Open	1 pound (spearing/sale)	None

Restrictions

Season

Species



Minimum mesh size 1-1/2 inches;
Unlawful to take akule under 8-1/2 inches with net during July - October

Akule & Halaalu

Open



No minimum mesh size;
Unlawful to use animal bait except with hook-and-line in waters of South Kona between Kiilae-Keokea and Kapua-Kaulanamauna boundaries

Opelu

Open



Bag limit one gallon (home consumption);
Nets over 50 feet for commercial use only;
Bait license required for commercial use;
Unlawful to sell or trade dried or cured nehu

Nehu

Open



Commercial use only, bait license required;
Unlawful to sell or trade dried or cured 'iao

'Iao

Open

OTHER BAITFISH

Marquesan sardine, piha, tabai and threadfin shad

Season open; small mesh nets for commercial use only, bait license required, no bag limit.

SEA TURTLES

No open season. Federal laws also apply to these endangered and threatened species.



HAWAIIAN MONK SEAL

Unlawful to molest, kill, capture or possess at any time. Federal laws also apply to these endangered species.



CORAL AND LIVE ROCKS

Stony coral

Unlawful to intentionally take, break or damage, with crowbar, chisel or any other implement, any live stony coral from the waters of the State, including any live reef or mushroom coral.
Unlawful to sell or offer for sale any stony coral of the following species:

Montipora verrucosa, *Fungia scutaria*,
Pocillopora damicornis, *Pocillopora meandrina*, *Pocillopora eydouxi*,
Porites compressa, *Porites lobata* and *Tubastraea coccinea*.



Pink, gold, and black corals

Unlawful to take, destroy, possess or sell any pink or gold corals from State waters.

Unlawful to take, destroy, or possess any black coral with a base diameter of less than 3/4 inches from State waters.

Exceptions: With a permit, to take or possess pink or gold coral for scientific or educational purposes; or to take or possess pink or gold coral for commercial purposes, provided that harvesters make every effort to take only mature colonies of pink coral 10 inches or larger in height. Note: Harvesting of pink, gold or black corals may be suspended at any time.

Live rocks

Unlawful to intentionally take, break or damage, with crowbar, chisel or any other implement, any rock or coral to which marine life is visibly attached or affixed.

LIMU (ogo)

Prohibited

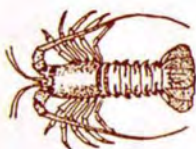
To take with the holdfast, the part attaching to a rock or other surface.

To take when covered with reproductive nodes or bumps.

Bag limits

One pound per person per day for home consumption.
Ten pounds per day per marine licensee for commercial purposes. **No commercial taking on Maui.**



**Species****Season****Minimum Size****Other Restrictions**

Ula
(spiny lobster)

Closed
May - August

3-1/4 inches
(carapace length)
Special provisions for NWHI

No spearing, no taking with eggs, whole only, not mutilated. No selling or holding for sale with eggs.

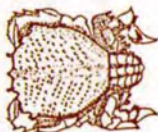


Ula papapa
(slipper lobster)

Closed
May - August

2-3/4 inches
(tail width)
Special provisions for NWHI

No spearing, no taking with eggs, whole only, not mutilated. No selling or holding for sale with eggs.



Kona crab

Closed
May - August

4 inches
(long or wide)
(sale)

No spearing, no taking with eggs. No selling or holding for sale with eggs.



Kuahonu crab
(white crab)

Open

4 inches
(long or wide)
(sale)

No spearing, no taking with eggs. No selling or holding for sale with eggs.



Samoa crab

Open

6 inches
(width across back)

No spearing, no taking with eggs. No selling or holding for sale with eggs.



He'e
(octopus, tako, "squid")

Open

1 pound

None

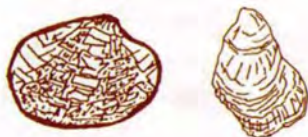


Opihi

Open

1-1/4 inches
(shell diameter)
1/2 inch
(meat diameter, if meat only)

None



**Clams, oysters,
and other shellfish**
(including abalone)

Closed

Taking prohibited

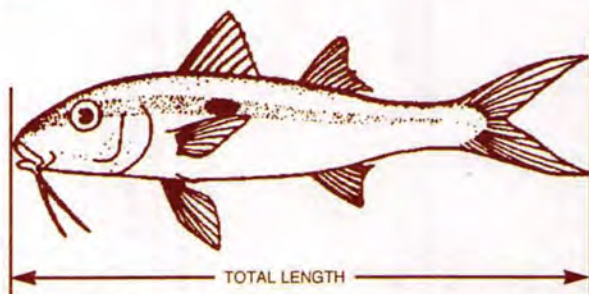
None

Freshwater Game Fishing License required for introduced game species. Unlawful to sell introduced game species. See also special provisions for individual areas.

	Species	Season	Minimum Size	Bag Limit
Introduced				
	Largemouth bass	Open	9 inches Catch and release only in Wahiawa PFA	10 (total lg & smmouth) Catch and release only in Wahiawa PFA
	Smallmouth bass	Open	9 inches Catch and release only in Wahiawa PFA	10 (total lg & smmouth) Catch and release only in Wahiawa PFA
	Channel catfish	Open Special provisions for Nuuanu Reservoir	None	3 Special provisions for Nuuanu Reservoir
	Rainbow trout	Restricted (Kokee, Kauai only) See page 34	None	7
	Tucunare	Open	12 inches Catch and release only in Wahiawa PFA	3 Catch and release only in Wahiawa PFA
	Oscar	Open	10 inches Special provisions for Wahiawa PFA	3 Special provisions for Wahiawa PFA
	Bluegill Sunfish	Open	None	None
Native				
	O'opu & Hinana	Open	Restrictions: Use of traps, weirs and nets (except thrownets) prohibited Possession of nets (except thrownets) near waters where 'o'opu or hinana may be taken prohibited Sale of 'o'opu or hinana prohibited	
	Hihiwai, Hapawai & Opae kala'ole	Open	Restrictions: Unlawful to sell or offer for sale	

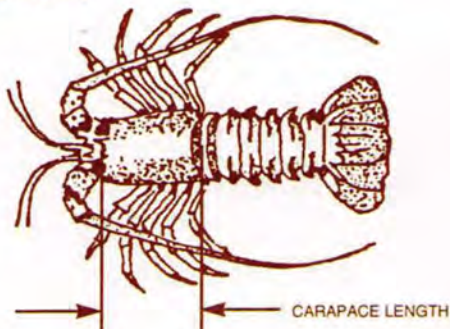
MEASURING FISH AND INVERTEBRATES

Fish



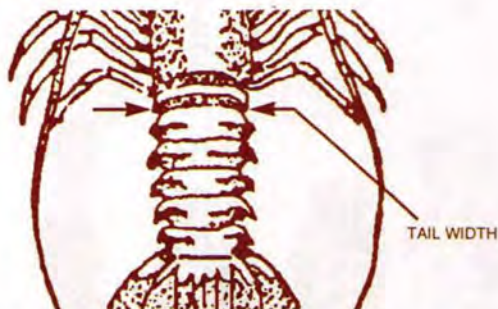
Measure **TOTAL LENGTH**, the distance from mouth or snout to end of tail.

Ula (spiny lobster)



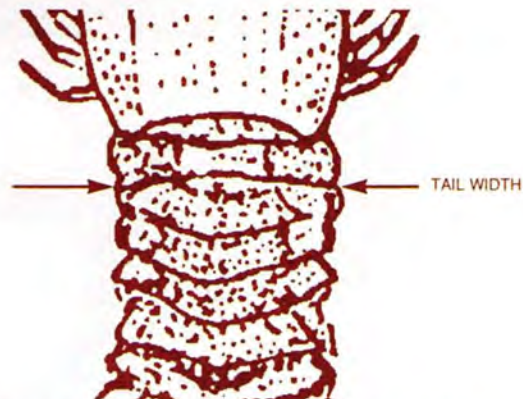
Measure **CARAPACE LENGTH**, the distance from ridge between two largest spines above eyes to rear edge of carapace.

Ula (Northwestern Hawaiian Islands only)



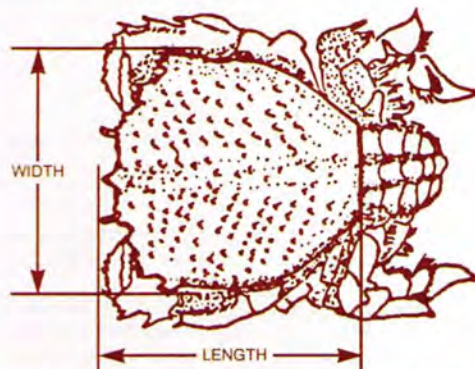
Measure **TAIL WIDTH** between first and second abdominal spines.

Ula papapa (slipper lobster)



Measure **TAIL WIDTH** between first and second abdominal segments.

Kona crab, Kuahonu crab



Measure **LENGTH** or **WIDTH** of carapace at widest point.

Samoan crab



Measure **WIDTH** of carapace at widest point.

REGULATED FISHING AREAS

OAHU



Hanauma Bay Marine Life Conservation District

Location: The Hanauma Bay Marine Life Conservation District is located offshore of the City and County of Honolulu's Hanauma Bay Beach Park on the southeastern coast of Oahu, from the highwater mark seaward to a line from Palea Point to Paiohulu Point. Hanauma Bay has also been designated as a State Underwater Park of the Division of State Parks. Rules of the State Park system also apply to the use of the underwater park.

Permitted

- To possess in the water a knife for personal safety.
- With a permit, to engage in activities otherwise prohibited by law for scientific, propagation or other purposes.

Prohibited

- To fish for, take or injure any marine life (including eggs), or possess in the water any device that may be used for the taking of marine life.
- To take or alter any sand, coral or other geological feature or specimen, or possess in the water any device that may be used for the taking or altering of a geological feature or specimen.
- To introduce any food or other substance into the water to feed or attract marine life.
- To operate any watercraft.



Pupukea Marine Life Conservation District

Location: The Pupukea Marine Life Conservation District includes Shark's Cove and the adjacent shoreline area along the northern coast of Oahu, offshore of the City and County of Honolulu's Pupukea Beach Park, from the highwater mark seaward to a line from Kulalua Point to the point at the beach park's southwestern end (excluding the tidepool area).

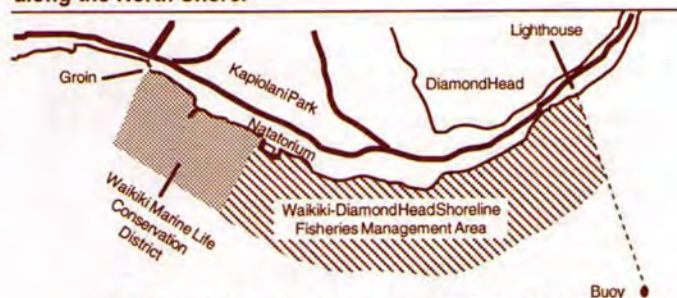
Permitted

- To fish for, take or possess any algae or limu, and any finfish by pole-and-line from the shoreline, by spear without use of SCUBA, and by net in the northernmost portion as indicated.
- To possess fishing gear in the water, provided that divers using SCUBA may transit through with spears and marine life taken outside the District.
- To possess in the water any knife and any shark billy, bang stick, powerhead or carbon dioxide injector.
- With a permit, to engage in activities otherwise prohibited by law for scientific, propagation or other purposes.

Prohibited

- To fish for, take or injure any marine life (including eggs), or possess in the water any device that may be used for the taking of marine life, except as indicated in permitted activities above.
- To take or alter any sand, coral or other geological feature or specimen, or possess in the water any device that may be used for the taking or altering of a geological feature or specimen.

Note: Hazardous to enter water during periods of high surf along the North Shore.



Waikiki Marine Life Conservation District

Location: The Waikiki Marine Life Conservation District extends from the groin at Kapahulu Avenue to the ewa wall of the Waikiki War Memorial Natatorium, from the highwater mark out to a minimum seaward distance of 500 yards, or to the seaward edge of the fringing reef if one occurs beyond 500 yards.

Permitted

- To possess in the water any knife and any shark billy, bang stick, powerhead or carbon dioxide injector.
- With a permit to engage in activities otherwise prohibited by law for scientific, propagation or other purposes.

Prohibited

- To fish for, take or injure any marine life (including eggs), or possess in the water any device that may be used for the taking of marine life.
- To take or alter any sand, coral or other geological feature or specimen, or possess in the water any device that may be used for the taking or altering of a geological feature or specimen.

Waikiki-Diamond Head Shoreline Fisheries Management Area

Location: The Waikiki-Diamond Head Shoreline Fisheries Management Area extends from the ewa wall of the Waikiki War Memorial Natatorium to the Diamond Head Lighthouse, from the highwater mark out to a minimum seaward distance of 500 yards, or to the seaward edge of the fringing reef if one occurs beyond 500 yards.

Fishing periods

- "Open to fishing" from January 1 to December 31 of even-numbered years (2000, 2002, etc.).
- "Closed to fishing" from January 1 to December 31 of odd-numbered years (1999, 2001, etc.).

Permitted

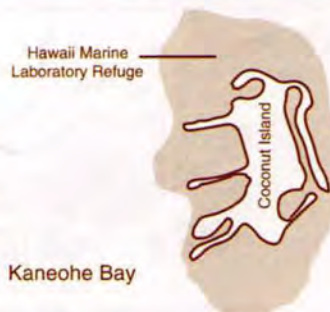
- To fish for, take or possess any legal size marine life in season during the "open to fishing" period, provided that only hook-and-line, thrownet, handnet to land hooked fish, and spear fishing and hand harvesting methods are employed.
- With a permit to engage in activities otherwise prohibited by law for scientific, propagation or other purposes.

Prohibited

- To fish for, take or injure any marine life (including eggs), or to possess in the water any fishing gear during the "closed to fishing" period.
- To use any spear between the hours of 6:00 pm to 6:00 am, or have or possess in the water any trap or net except thrownet or handnet to land hooked fish during the "open to fishing" period.

Coconut Island - Hawaii Marine Laboratory Refuge

Location: The Hawaii Marine Laboratory Refuge consists of the reefs and bay waters surrounding Coconut (Moku-o-loe) Island located in Kaneohe Bay, from the highwater mark on the island seaward to twenty-five feet beyond the outer edges of the reefs.

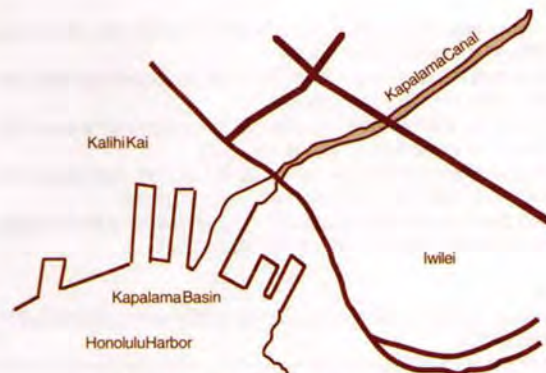
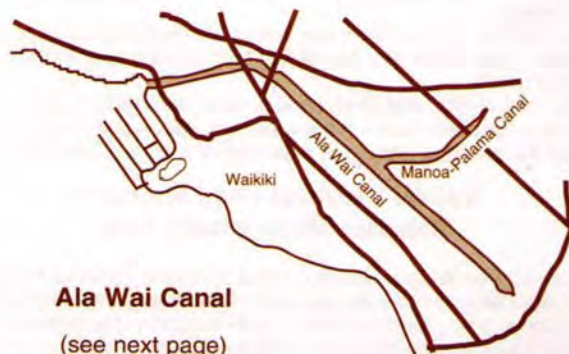


Prohibited

- Unlawful to take any aquatic life from within the boundaries of the refuge.

Exceptions

- This restriction does not apply to any officer, faculty member, employee or student of the University of Hawaii, or licensee of the Board of Regents of the University of Hawaii while employed in catching or taking of aquatic life for scientific purposes. All authorized taking of aquatic life must follow minimum size and closed seasons for certain species, gear restrictions, etc.



Ala Wai Canal, Kapalama Canal

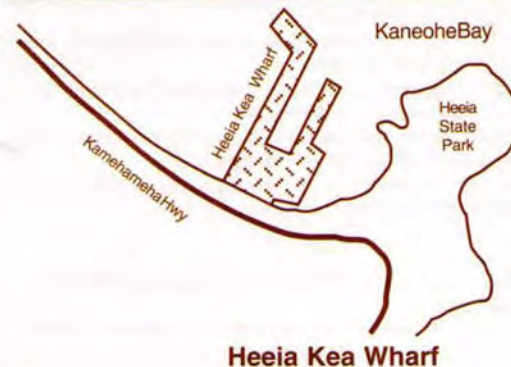
Location: Ala Wai Canal is located immediately north of Waikiki, and for the purposes described here includes the Manoa-Palolo drainage canal at the mouth of Manoa and Palolo Streams. Kapalama Canal is located at the mouth of Kapalama Stream, north of Sand Island.

Permitted

- To take any legal size fish in season with one line, or one rod and line, with no more than two hooks.
- To take crabs with not more than 10 nets, provided the nets are not more than two feet in diameter.
- To take shrimp for bait with a hand net, provided that the net is not more than three feet in any dimension.
- Within the Ala Wai Canal only, take up to 50 "tabai" or mosquito fish, 'o'opu akupa, tilapia or a combination thereof per day for non-commercial purposes, with a single small mesh net, provided the net including the handle and any attachment is not more than three feet in any dimension.
- Commercial Marine licensees with a Bait License may take nehu, iao, and other authorized baitfish for bait purposes.
- Licensed pond owners or operators may take young mullet (pua) or other small fish for stocking their fishpond.

Prohibited

- To fish in or take aquatic life, except as indicated in permitted activities above.



Heeia Kea Wharf

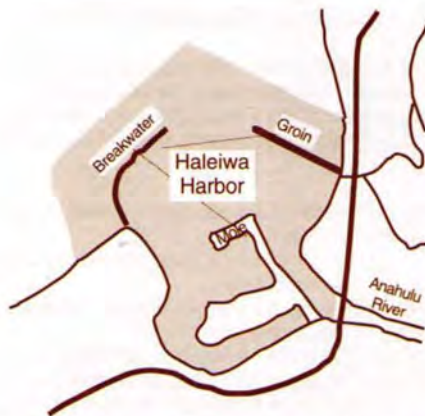
Location: Heeia Kea Wharf is located at Heeia Kea Boat Harbor on Kaneohe Bay, Oahu.

Permitted

- To take any legal size fish in season with one line, or one rod and line, with no more than two hooks.
- To take crabs with not more than 10 nets, provided the nets are not more than two feet in diameter.
- To take shrimp for bait with a hand net, provided that the net is not more than three feet in any dimension.
- Commercial Marine licensees with a Bait License may take nehu, iao, and other authorized baitfish for bait purposes.
- Licensed pond owners or operators may take young mullet (pua) or other small fish for stocking their fishpond.

Prohibited

- To fish in or take aquatic life, except as indicated in permitted activities above.



Waialua Bay (Haleiwa Harbor)

Location: That portion of Waialua Bay at Haleiwa bounded by lines drawn 100 yards seaward of and parallel to the Haleiwa Harbor Breakwater and 100 yards seaward of and parallel to the Haleiwa Beach Groyne, and inland by a line ten yards downstream of and parallel to the Anahulu Bridge.

Permitted

- To take any legal size fish in season with one line, or one rod and line, with no more than two hooks.
- To take crabs with not more than 10 nets, provided the nets are not more than two feet in diameter.
- To take shrimp for bait with a hand net, provided that the net is not more than three feet in any dimension.
- Commercial Marine licensees with a Bait License may take nehu, iao, and other authorized baitfish for bait purposes.
- Licensed pond owners or operators may take young mullet (pua) or other small fish for stocking their fishpond.

Prohibited

- To fish in or take aquatic life, except as indicated in permitted activities above.



Honolulu Harbor

Location: Honolulu Harbor is the primary port on the southern coast of Oahu.

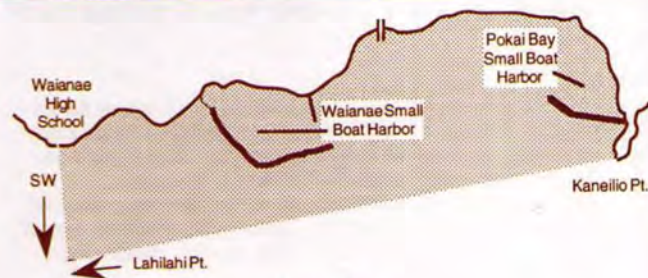
Permitted

- Commercial Marine licensees with a Bait License may take baitfish during periods scheduled by the harbor master.

Prohibited

- Unlawful to take fish by means of any draw, drag or seine net.

Note: All boaters must be in contact with the harbor controller (VHF Ch. 12) whenever operating in Honolulu Harbor.



Pokai Bay

Location: That portion of Pokai Bay including the Pokai Boat Harbor and the Waianae Small Boat Harbor, the seaward boundary a straight line from Kaneilio Point to Lahilahi Point, and the northwestern boundary a straight line extending southwest from the point immediately seaward of Waianae High School.

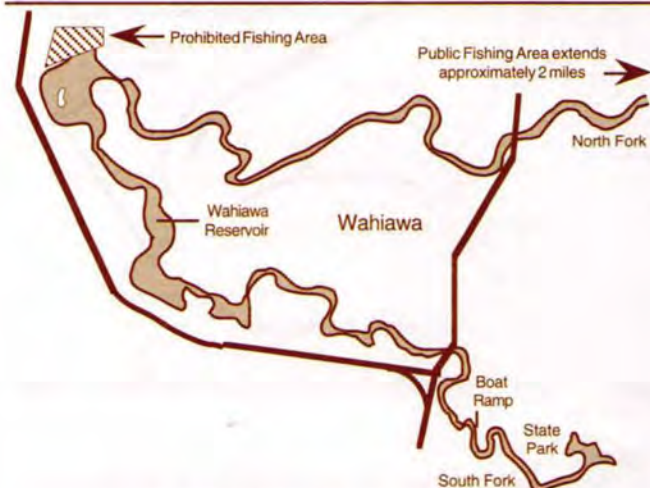
Permitted

- To take any legal size fish in season with one line, or one rod and line, with no more than two hooks.
- To take crabs with not more than 10 nets, provided the nets are not more than two feet in diameter.
- To take shrimp for bait with a hand net, provided that the net is not more than three feet in any dimension.

- Commercial Marine licensees with a Bait License may take nehu, iao, and other authorized baitfish for bait purposes.
- Licensed pond owners or operators may take young mullet (pua) or other small fish for stocking their fishpond.

Prohibited

- To fish in or take aquatic life, except as indicated in permitted activities above.



Wahiawa Public Fishing Area

Location: The Wahiawa Public Fishing Area includes a portion of the privately-owned Wahiawa Reservoir (Lake Wilson) in the central portion of Oahu. The Wahiawa State Freshwater Park is located along the South Fork of the Reservoir and includes a boat launching ramp and vehicle-trailer parking areas. The Park is a facility of the Division of State Parks. Rules of the State Parks System apply to the use of the facility.

Permitted

- To fish with hook-and-line with not more than one lure or baited hook or two artificial flies attached to a single line, provided that on weekends and holidays only one line may be used, and on weekdays other than holidays two lines may be used.
- To use attended traps and dip nets up to two feet long, wide, or high, excluding the handle, to land hooked fish or to take certain baitfishes, provided that tucunare, bass, channel catfish and oscar shall not be used as bait.

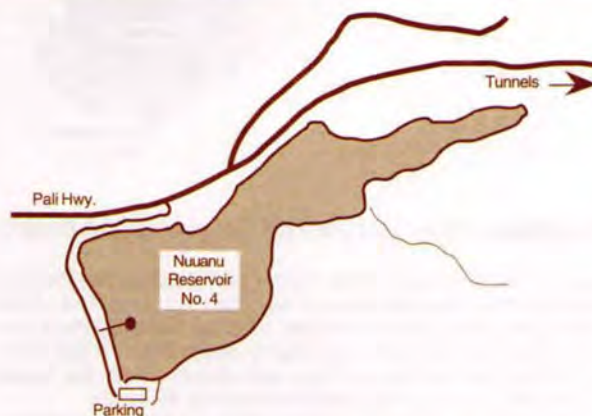
Prohibited

- To enter into or fish without a valid Freshwater Game Fishing License and entry permit or other appropriate license or permit, and a USCG approved personal flotation device, and provided that all licensees or permittees under 15 years of age are accompanied by an adult.
- To enter onto, fish from, or approach within 200 feet of the spillway dam and its shoreline, or to enter into or fish within the Forest Reserve along the North Fork.
- To swim, water ski, camp, picnic, build fires, dispose of refuse or pollute the waters, or damage public or private property.
- To possess any firearms, air rifles or pistols, bows and arrows, spear, trotlines, nets other than dip nets, chemicals or other illegal fishing gear.

- To snag any fish.
- To operate a boat exceeding 18 feet in length, or for purposes other than fishing, or at speeds in excess of five miles per hour, or constructed of material other than wood unless provided with flotation to render the boat unsinkable.

Exceptions to size and bag limits

- *Bass and tucunare.* Catch and release fishing only. Unlawful to keep, retain, hold, or kill any bass or tucunare. Bass or tucunare brought to shore or on board a vessel must be returned to the water immediately.
- *Oscar.* Bag limit 1.



Nuuanu Freshwater Fish Refuge

Location: The Nuuanu Freshwater Fish Refuge includes the City and County of Honolulu's Nuuanu Reservoirs No. 2, 3, and 4, located between Honolulu and Kailua off the Pali Highway on Oahu.

Permitted

- Regulated channel catfish fishing is conducted annually during May, August and November in Reservoir No. 4. Special fishing permits and Freshwater Game Fishing License required.
- To take up to two channel catfish per licensee per session during the open period, provided that all channel catfish over 16 inches must be kept.

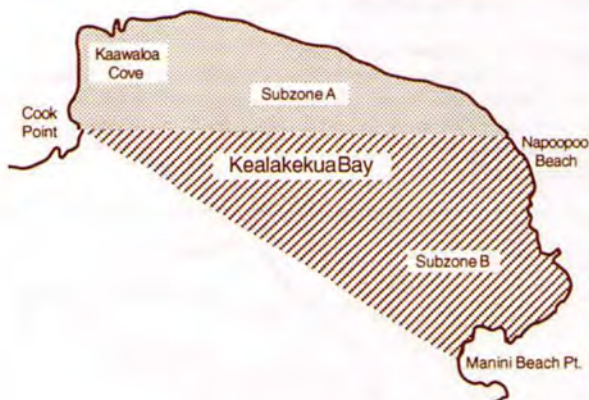
Prohibited

- To enter into refuge unless accompanied by an agent of, or with a permit issued by the Board of Land and Natural Resources.

THE ETHICAL FISHERMAN

- Keeps only the fish he needs.
- Doesn't pollute - properly disposes of trash.
- Improves fishing and boating skills.
- Observes fishing and boating safety regulations.
- Respects other fishermen's rights.
- Respects property owners rights.
- Passes on knowledge and fishing skills.
- Supports local conservation efforts.
- Doesn't release live bait into freshwater systems.
- Promotes the sport of fishing.

HAWAII



Kealakekua Bay Marine Life Conservation District

Location: The Kealakekua Bay Marine Life Conservation District is located offshore of the Kealakekua Bay Historical State Park on the western coast of the island of Hawaii, from the highwater mark seaward to a line from Cook Point to Manini Beach Point. A line from Cook Point to the north end of Napoopoo Beach divides the District into Subzone A to the north, and Subzone B to the south. Kealakekua Bay has also been designated as a State Underwater Park of the Division of State Parks. Rules of the State Park system also apply to the use of the underwater park. The Division of Boating and Ocean Recreation has also established provisions relating to boating, anchoring and mooring within the Marine Life Conservation District.

Permitted

- Within Subzone B only, to fish for, take or possess any finfish with or by the use of hook-and-line and thrownet, provided that any legal fishing device or method except traps may be used for the taking of akule, opelu and crustaceans.
- To possess in the water any knife and any shark billy, bang stick, powerhead or carbon dioxide injector.
- With a permit to engage in activities otherwise prohibited by law for scientific, propagation or other purposes.

Prohibited

- To fish for, take or injure marine life (including eggs), except as indicated in "Permitted" activities above.
- To take or alter any sand, coral or other geological feature or specimen.

Lapakahi Marine Life Conservation District

Location: The Lapakahi Marine Life Conservation District encompasses Subzone A (Koaie Cove) and Subzone B, the adjacent shoreline area extending approximately 500 feet offshore of the Lapakahi State Historical Park on the northwestern coast of the island of Hawaii.

Permitted

- Within Subzone B only, to fish for, take or possess any opelu by lift or "opelu" net, or any finfish or crustacean by hook-and-line or thrownet.
- To possess in the water any knife and any shark billy, bang stick, powerhead or carbon dioxide injector.
- With a permit to engage in activities otherwise prohibited by law for scientific, propagation or other purposes.

Prohibited

- To fish for, take or injure any marine life (including eggs), or possess in the water any device that may be used for the taking of marine life.
- To take or alter any sand, coral or other geological feature or specimen, or possess in the water any device that may be used for the taking or altering of a geological feature or specimen.



Waialea Bay Marine Life Conservation District

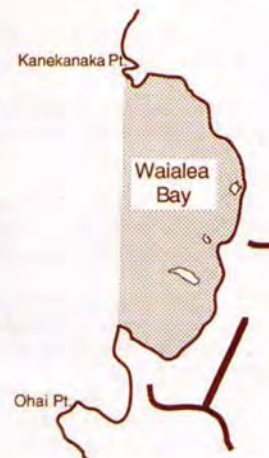
Location: The Waialea Bay Marine Life Conservation District is located offshore of Waialea Bay along the northwestern coast of the island of Hawaii, from the highwater mark seaward to a line from Kanekanaka Point to the point immediately north of Ohai Point.

Permitted

- To have or possess any fishing pole and hook-and-line, and to fish for, take or possess any finfish using such gear.
- To possess in the water any knife and any shark billy, bang stick, powerhead or carbon dioxide injector.
- With a permit to possess and use legal nets to fish for, take or possess finfishes over the sandy bottom areas within the District, and to engage in activities otherwise prohibited by law for scientific, propagation or other purposes.

Prohibited

- To fish for, take or injure any marine life (including eggs), or possess in the water any device that may be used for the taking of marine life, except as indicated in permitted activities above.
- To take or alter any sand, coral or other geological feature or specimen, or possess in the water any device that may be used for the taking or altering of a geological feature or specimen.





Old Kona Airport Marine Life Conservation District

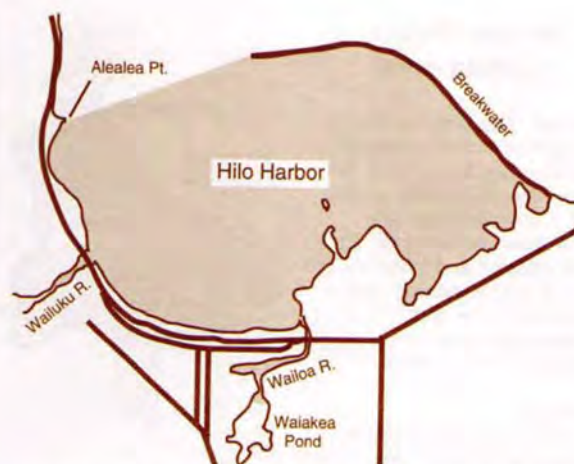
Location: The Old Kona Airport Marine Life Conservation District (MLCD) includes (1) the waters offshore of the Old Kona Airport to the Kailua Lighthouse, bounded by a straight line from Point "A" seaward 500 yards, to a straight line from the Kailua Lighthouse seaward 500 yards; and (2) a "No Boating Zone" within the MLCD bounded by a straight line from Keahulou Point to the southwestern corner of the private property at Point "B".

Permitted

- To fish for, take, possess or remove akule by handline at night, and opelu by lift or opelu net method using bait or chum for commercial or home consumption.
- To fish for, take, possess or remove any finfish for home consumption by throw net or pole-and-line (without reel) with bait from shore.
- To use the state mooring not longer than three hours per boat each day on a first come, first served basis for non-commercial use.
- Commercial dive/tour operations may be conducted at the mooring and from shore with a permit.

Prohibited

- To fish for, take, injure, kill, possess or remove any marine life, including live sea shell and opihi, live coral, algae or limu, or other marine life, or their eggs, except as indicated in permitted activities above.
- To take or alter any sand, shell, coral, rock or other geological feature or specimen, or to possess in the water any device that may be used for the taking or altering of marine life, geological feature or specimen.
- To feed or introduce any food material, substance or device as an attractant, directly to or in the vicinity of any aquatic organism except for the purpose of catching and removing that organism as permitted.
- To anchor a water craft in the MLCD, or operate a motorboat or other motor powered water craft within the "No Boating Zone" except for emergency or enforcement purposes.
- To conduct commercial dive/tour activities except as indicated in permitted activities above.



Hilo Harbor, Waioa River, and Wailuku River

Location: "Hilo Harbor" refers to that portion of the bay in Hilo bounded seaward by the breakwater, and a line from the tip of the breakwater southwestward to Alealea Point. "Waioa River" is that part of Waioa River bounded by a line drawn across the mouth of the river and the footbridge at the mouth of Waioa Pond, and includes Waioa Canal upstream to the highest wash of the tidal water. "Wailuku River" is that part of Wailuku River between the Mamalahoa Highway bridge and Wainaku Avenue bridge.

Permitted

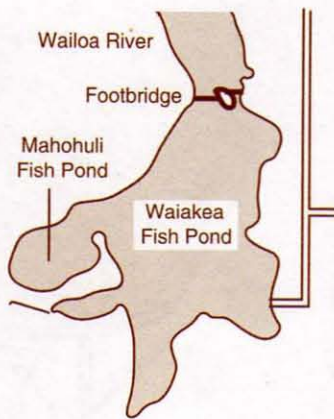
- Use of thrownets, opae nets not exceeding three feet in any dimension, and nehu nets not longer than fifty feet to take nehu for family consumption or bait purposes.
- Taking of crabs with baited lines, provided that a dip net may be used to land crabs lured to the bait, or with not more than five crab nets not exceeding two feet in longest straight line dimension and stretched mesh of not less than two inches, provided such nets are attended to at all times.
- Commercial Marine licensees with a bait license may take bait-fishes.
- Licensed pond owners or operators may take young mullet (pua) or other small fish for stocking their fishpond, except in Waioa River.

Prohibited

- Use of nets, except as indicated in permitted activities above.
- To catch or possess more than 20 fish of all species of mullet, moi and ulua (including papio and omilu), provided such bag limit shall not include more than 15 moi. Mullet and moi may not be taken during their closed seasons.
- To fish with more than two poles with one line each, or two hand-lines, or with more than two hooks or lures per line.
- To use traps.
- To take or possess more than three Samoan crabs per day, or any Samoan crab less than six inches in width, and kuahonu (white) crabs measuring less than four inches in width across the back, or any crab with external eggs or with missing or mutilated abdomen or tail, or with a puncture wound; also, to spear crabs.
- To snag any fish.
- To use or possess a thrownet or spear in Waioa River.

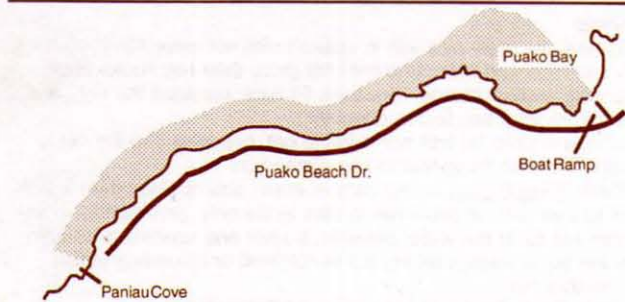
Waiakea Public Fishing Area

Location: The Waiakea Public Fishing Area includes that portion of the Waiakea fish pond in the Wailoa River State Park in Hilo, south of the footbridge over Wailoa River, including the flood control channel and Mahohuli fish pond. A boat launching ramp is located within the park. Rules of the state parks system also apply to the use of the facility.



Prohibited

- To snag or attempt to snag any fish.
- To use any type of net, except handnets as indicated in permitted activities above.



Puako Bay and Puako Reef

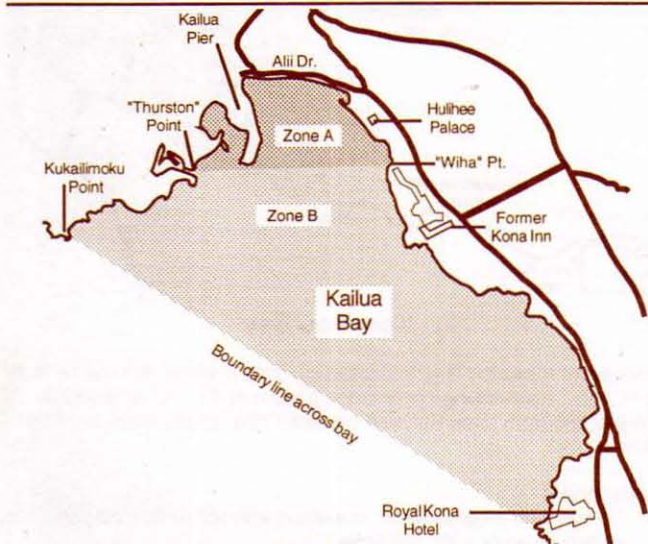
Location: Puako Bay and Puako Reef include that portion of the reef from the shoreline at the westernmost edge of the boat ramp, along a line drawn parallel with the ramp seaward to the edge of the fringing reef, then southwestward a minimum seaward distance of 250 yards or to the edge of the fringing reef if one occurs beyond 250 yards, to a line due west of the small cove at the southern end of Puako Beach Road.

Permitted

- To possess aboard any boat or watercraft any legal fishing gear and any fish or other aquatic life taken outside of the area.
- With a permit to engage in activities otherwise prohibited by law for scientific, propagation or other purposes.

Prohibited

- To possess or use any type of net except thrownet.



Kailua Bay

Location: The Kailua Bay Fisheries Management Area includes that portion of Kailua Bay enclosed by a straight line drawn from Kukailimoku Point to the seawall of the Royal Kona Resort. A line from the

Permitted

- To fish with not more than one line and one lure, or two single hooks in tandem no more than two inches apart.
- To use a dip net not exceeding 18 inches in diameter to land crabs lured to baited lines or to catch shrimp for bait purposes.
- To fish for, take or possess an overall total of 20 fishes that include aholehole, ulua (including papio) and mullet, provided mullet shall not comprise more than ten fishes.
- With a valid Freshwater Game Fishing License, to fish for, take or possess any introduced freshwater game fishes.

Prohibited

- To operate boats for purposes other than fishing; to use boats constructed of material other than wood unless provided with flotation to render the boat unsinkable; for any juvenile under 13 years old to operate any boat unless accompanied by an adult 18 years of age or older; to propel any boat with a fossil fuel motor; to operate any boat between 7:30 pm and 6:30 am; or to operate a boat at any time without a life preserver for each occupant.
- To permanently moor any boat.
- To swim, water ski or engage in any other activity requiring immersion.
- To snag any fish.
- To enter into or fish in any area posted as fishing reserves or prohibited fishing zones.
- To fish for mullet during the closed season.
- To take or possess more than 3 Samoan crabs per day, or any Samoan crab less than 6 inches in width.
- To possess or use a spear.

Kawaihae Harbor

Location: Kawaihae Harbor is located at Kawaihae, South Kohala, on the northwest coast of the island of Hawaii. Restrictions apply to the south small boat basin as indicated in the map at right.



Permitted

- To take any legal size fish in season with not more than two lines, or two poles or rods and lines.
- To use hand nets not exceeding three feet in any dimension to take shrimp or nehu for bait purposes, or to land fish already hooked.

northern edge of the channel at "Thurston Point" to the corner ("Wiha Point") south of Hulihee Palace and north of the former Kona Inn Hotel separates "Zone A" in the northwestern portion of the FMA from the seaward "Zone B", as shown.

Permitted

- To take any legal size fish in season with not more than two lines, or two rods and lines, and with not more than two hooks each.
- To take crabs with not more than 10 nets, provided the nets are not more than two feet in diameter.
- To take shrimp for bait with a hand net, provided that the net is not more than three feet in any dimension.
- Within Zone B only, to use nets of mesh size not less than 3 inches to take fish, or akule net to take akule only, provided that nets shall not be in the water between sunset and sunrise, or remain in the water except during active retrieval or unloading of fish from that net.
- Within Zone B only, to use spears or thrownets.
- Commercial Marine licensees with a Bait License may take nehu and iao for bait purposes.
- Licensed pond owners or operators may take young mullet (pua) or other small fish for stocking their fishpond.

Prohibited

- To snag or attempt to snag any fish.
- To herd, chase or paipai fish out of Zone A by swimming, diving or from a boat, which results in fish being taken by net.
- To possess any spear or thrownet while transiting Zone A.
- To otherwise fish for or take aquatic life, except as indicated in permitted activities above.



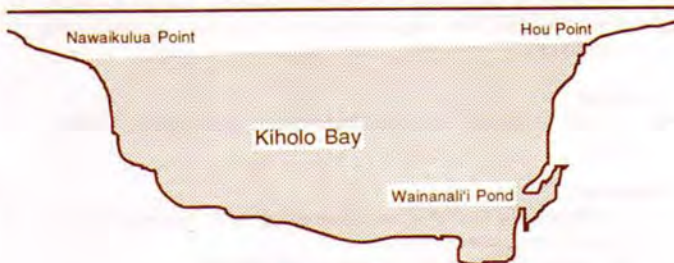
Location: Keauhou Bay is located in North Kona on the west coast of Hawaii. Restrictions apply to the portion of the bay bounded by a straight line from "Doc Hill" to Kinimaka Point, as shown in the map above.

Permitted

- To take any legal size fish in season with not more than two lines, or two poles or rods and lines.
- To use hand nets not exceeding three feet in any dimension to take shrimp for bait purposes only, or to land fish already hooked.
- To use thrownets in the zone bounded by a straight line from "Doc Hill" to the north end stairs in the wall fronting the volleyball court, as shown in the map above.

Prohibited

- To snag or attempt to snag any fish.
- To use nets, except as indicated in permitted activities above.
- To herd or chase any fish out of the area by swimming, diving or using a boat.



Kiholo Bay

Location: The Kiholo Bay Fisheries Management Area includes that part of Kiholo Bay enclosed by a straight line drawn from Nawaikulu Point to Hou Point as shown, including the lagoon known as Wainanali'i Pond, but not Luahinewai Pond.

Permitted

- Aquarium fish permittees may use small-meshed nets other than thrownets, provided the person is within visual range of the net at all times.

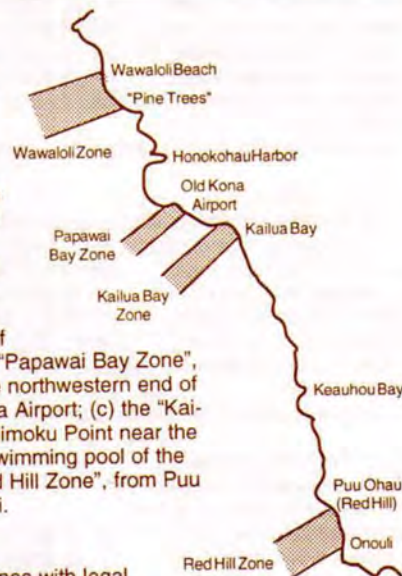
Prohibited

- To possess gill nets within the Fisheries Management Area.

Kona Coast

Location: "Kona Coast" refers to the following four Fisheries Management Area Zones on the southwestern portion of Hawaii, each bounded by two lines extending seaward at right angles from shore and marked by signs on shore:

(a) the "Wawaloli Zone", from the northern end of Wawaloli Beach to south of Wawahiwa Point; (b) the "Papawai Bay Zone", from Keahuolu Point to the northwestern end of the runway of the Old Kona Airport; (c) the "Kailua Bay Zone", from Kukailimoku Point near the Kailua lighthouse, to the swimming pool of the Kona Inn; and (d) the "Red Hill Zone", from Puu Ohau ("Red Hill") to Onouli.



Permitted

- To catch fish in the Zones with legal fishing gear for personal consumption.

Prohibited

- To collect any aquarium fish within the Zones.
- To engage in fish feeding within the Zones, except for opelu fishing.

West Hawaii Regional Fishery Management Area

Location: The West Hawaii Regional Fishery Management Area consists of nine fish replenishment areas (FRAs). Combined, the nine FRAs cover approximately 35 percent of the West Hawaii shoreline. Locations of each FRA are specified below. Except as otherwise indicated, the FRAs extend from the shoreline to a depth of 100 fathoms (600 ft).

Permitted

- All types of fishing, except as indicated in prohibited activities below.

Prohibited

- To take aquatic life for either commercial or non-commercial aquarium purposes.
- To engage or attempt to engage in fish feeding.

Site descriptions and boundaries

#1. North Kohala

Kamilo Gulch south to Kawaihae lighthouse; shoreline distance 4.0 mi.

Landward Northern Point: 20° 04.826' N; 155° 51.934' W

Landward Southern Point: 20° 02.471' N; 155° 49.988' W

Seaward Northern Point: 20° 04.378' N; 155° 53.344' W

Seaward Southern Point: 20° 01.654' N; 155° 51.875' W

Distance from landward to seaward points, northern/southern: 1.40/1.94 nm

Compass heading from landward to seaward coordinates: 225°

#2. Puako-'Anaeho'omalu

South end of Puako FMA to south side of 'Anaeho'omalu Bay (Kapalaoa); 5.8 mi.

Landward Northern Point: 19° 57.529' N; 155° 51.553' W

Landward Southern Point: 19° 54.641' N; 155° 53.893' W

Seaward Northern Point: 19° 59.206' N; 155° 53.383' W

Seaward Southern Point: 19° 57.034' N; 155° 56.658' W

Distance from landward to seaward points, northern/southern: 2.40/3.54 nm

Compass heading from landward to seaward coordinates: 300°

#3. Ka'upulehu

North boundary of Ka'upulehu ahupua'a (Pohaku 'O Kahae) to south side of Kalae o Kikaua (Kuki'o Bay); 3.6 mi.

Landward Northern Point: 19° 51.011' N; 155° 58.111' W

Landward Southern Point: 19° 49.209' N; 156° 00.132' W

Seaward Northern Point: 19° 53.817' N; 156° 00.994' W

Seaward Southern Point: 19° 51.724' N; 156° 03.947' W

Distance from landward to seaward points, northern/southern: 3.91/4.39 nm

Compass heading from landward to seaward coordinates: 300°

#4. Kaloko-Honokohau

South boundary of Wawaloli FMA (Wawahiwa'a Pt.) to Noio Pt. (south of Honokohau harbor); 3.0 mi.

Landward Northern Point: 19° 41.558' N; 156° 02.725' W

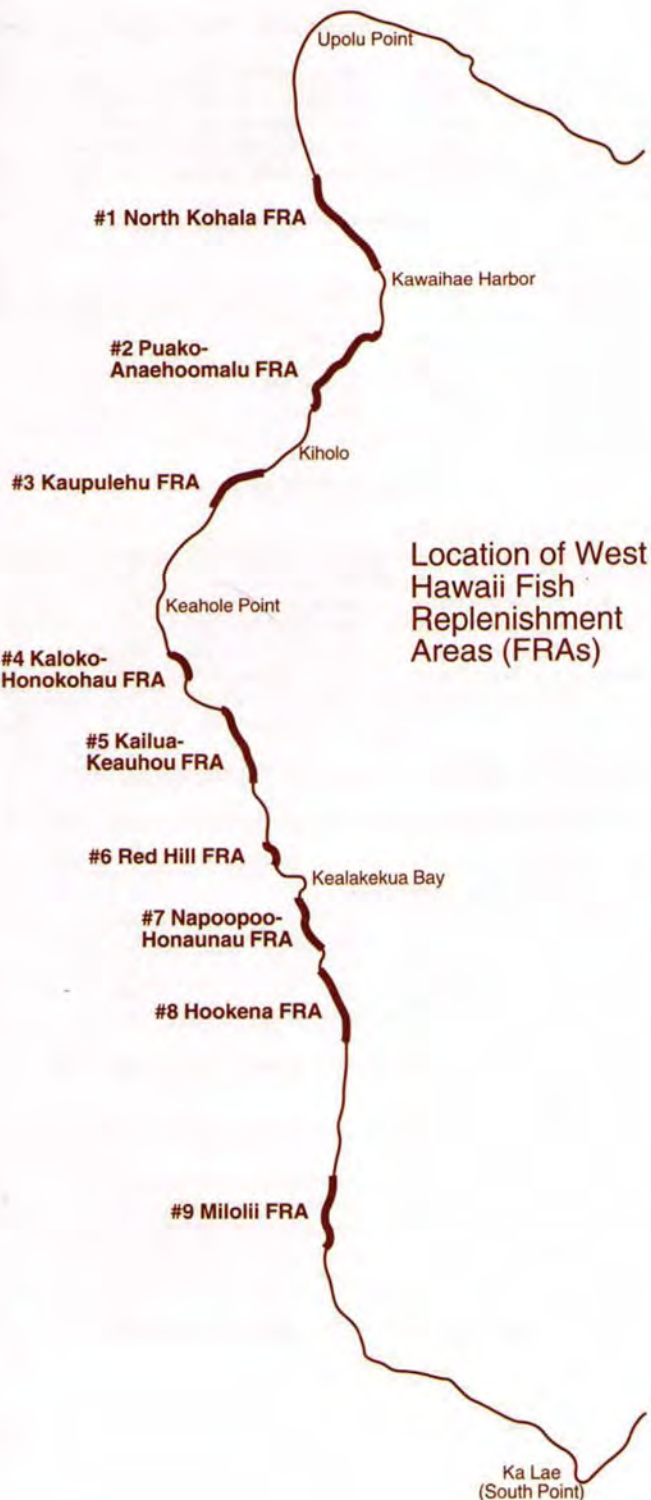
Landward Southern Point: 19° 40.059' N; 156° 01.741' W

Seaward Northern Point: 19° 41.368' N; 156° 03.031' W

Seaward Southern Point: 19° 39.844' N; 156° 02.169' W

Distance from landward to seaward points, northern/southern: 0.35/0.46 nm

Compass heading from landward to seaward coordinates: 240°



#5. Kailua-Keauhou

South boundary of Kailua Bay "Kona Coast" FMA to north boundary of Keauhou FMA; 6.5 mi.

Landward Northern Point: 19° 37.904' N; 155° 55.497' W

Landward Southern Point: 19° 33.726' N; 155° 57.829' W

Seaward Northern Point: 19° 37.089' N; 156° 01.449' W

Seaward Southern Point: 19° 32.801' N; 156° 00.004' W

Distance from landward to seaward points, northern/southern:

2.02/2.21 nm

Compass heading from landward to seaward coordinates: 245°

#6. Red Hill

Nenu Pt. to north boundary of Red Hill FMA (0.4 mi.), and south boundary of Red Hill FMA to Keawehakeka Pt. (0.5 mi.); total 0.9 mi.

Landward Northern Point: 19° 30.823' N; 155° 57.630' W

Landward Southern Point: 19° 29.252' N; 155° 57.068' W

Seaward Northern Point: 19° 30.166' N; 155° 58.953' W

Seaward Southern Point: 19° 28.991' N; 155° 57.536' W

Distance from landward to seaward points, northern/southern:

1.41/0.51 nm

Compass heading from landward to seaward coordinates: 235°

#7. Napo'opo'o-Honaunau

South boundary of Kealakekua MLCD (Manini Pt.) to south boundary of Pu'u'honua o Honaunau (Ki'ilae Bay); 5.3 mi.

Landward Northern Point: 19° 28.230' N; 155° 53.354' W

Landward Southern Point: 19° 24.559' N; 155° 54.343' W

Seaward Northern Point: 19° 28.688' N; 155° 56.898' W

Seaward Southern Point: 19° 24.725' N; 155° 55.162' W

Note: Northern boundary runs 0.25 nm along existing Kealakekua Bay MLCD southern boundary to 19° 28.443' N; 155° 55.708' W, then 270° to seaward northern point.

Distance from landward to seaward points, northern/southern:

1.13/0.79 nm

Compass heading from landward to seaward coordinates: 270°

#8. Ho'okena

Loa Pt. south to Ka'uloa Pt.; 6.0 mi.

Landward Northern Point: 19° 23.796' N; 155° 54.685' W

Landward Southern Point: 19° 19.458' N; 155° 53.426' W

Seaward Northern Point: 19° 23.690' N; 155° 55.095' W

Seaward Southern Point: 19° 19.403' N; 155° 53.688' W

Distance from landward to seaward points, northern/southern:

0.40/0.25 nm

Compass heading from landward to seaward coordinates: 240°

#9. Miloli'i

Makahiki Pt. (south of Papa Bay) south to Kakio Pt. (south of Kaupo Bay); 6.0 mi.

Landward Northern Point: 19° 14.071' N; 155° 54.082' W

Landward Southern Point: 19° 08.098' N; 155° 55.132' W

Seaward Northern Point: 19° 14.111' N; 155° 54.235' W

Seaward Southern Point: 19° 08.160' N; 155° 55.510' W

Distance from landward to seaward points, northern/southern:

0.15/0.36 nm

Compass heading from landward to seaward coordinates: 270°

South Kona (Miloli'i)

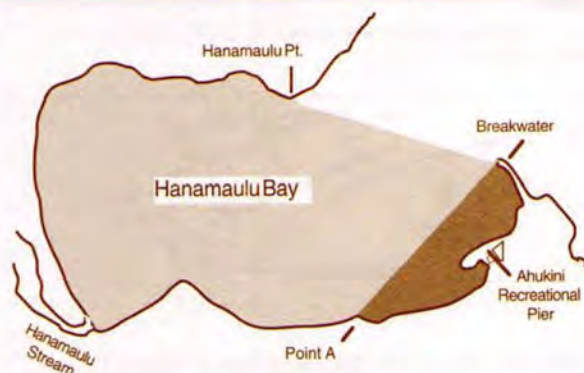
Location: The waters off the coast of South Kona between the Ki'ilae-Keokea boundary and the Kapua-Kaulanamauna boundary.

Prohibited

- To fish for or take opelu with fish or animal bait, except with hook and line.



KAUAI



Hanamaulu Bay and Ahukini Recreational Pier

Location: Ahukini Recreational Pier is a public fishing pier located in Hanamaulu Bay on the eastern coast of Kauai. The Ahukini Recreational Pier is a facility of the Division of State Parks. Rules of the State Park System also apply to the use of the facility.

Prohibited

- Within that portion of Hanamaulu Bay bounded seaward by the breakwater and a line drawn from the tip of the breakwater to Hanamaulu Point, to use any spear while SCUBA or skin diving between 6:00 pm and 6:00 am.
- Within the Ahukini Recreational Pier portion of Hanamaulu Bay bounded by the breakwater and a line drawn from the tip of the breakwater to "Point A" to the west of Ahukini Recreational Pier as shown in the map above, to use any type of net except thrownet and crab net.
- Within 50 yards of the Ahukini Recreational Pier or from the adjoining abandoned pier frame, to use any thrownet or spear.
- While on the Ahukini Recreational Pier, to snag any fish or possess any thrownet.

Kapaa and Waikaea Canals

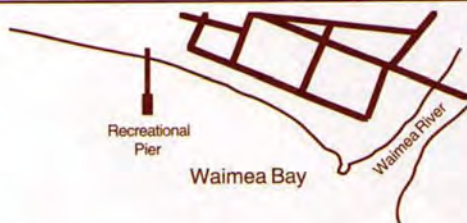
Location: Kapaa and Waikaea Canals are located in the city of Kapaa on the east coast of Kauai.

Permitted

- To take any legal size fish in season with one line, or one rod and line, with no more than two hooks.
- To take crabs with not more than 10 nets, provided the nets are not more than two feet in diameter.
- To take shrimp for bait with a hand net, provided that the net is not more than three feet in any dimension.
- Commercial Marine licensees with a Bait License may take nehu, iao, and other authorized baitfish for bait purposes.
- Licensed pond owners or operators may take young mullet (pua) or other small fish for stocking their fishpond.

Prohibited

- To fish in or take aquatic life, except as indicated in permitted activities above.



Waimea Bay and Waimea Recreational Pier

Location: Waimea Recreational Pier is a public fishing pier located in Waimea Bay on the southern coast of Kauai. The Waimea Recreational Pier is a facility of the Division of State Parks. Rules of the State Park System also apply to the use of the facility.

Prohibited

- Within 50 yards of the Waimea Recreational Pier, to use any spear, trap or any type of net except crab net.
- While on Waimea Recreational Pier, to
 - possess more than two fishing poles with one line each, or fish with more than two fishing lines, or leave any unattended fishing line in the water;
 - reserve or occupy any space between the marks other than the one space personally occupied for fishing; or
 - fish from any space between the marks already occupied by a fisherman.



Kokee Public Fishing Area

Location: The Kokee Public Fishing Area includes certain streams, reservoirs and ditches in the Kokee State Park on Kauai.

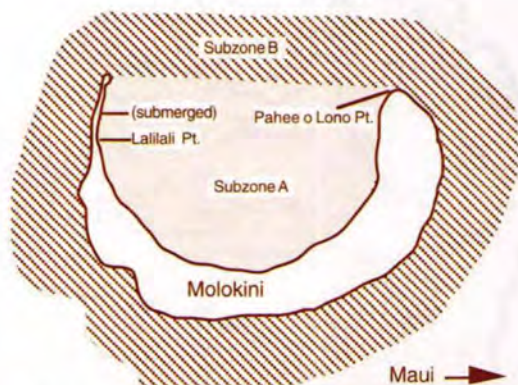
Permitted

- With a valid Freshwater Game Fishing License, to fish with one pole and line or one line using one baited hook attached to the single line, or possess any rainbow trout during the trout fishing season, beginning the first Saturday in August and continuing for a period of 16 consecutive days, then only on weekends and holidays for the remainder of August and September, unless suspended.
- To use a dip net up to two feet in longest axis, excluding the handle, to land hooked trout.
- To take up to seven trout per licensee per day during the open season, provided that additional legally taken trout may be possessed under refrigeration.
- To fish between 5:30 am and 6:45 pm during the open season, provided that all fishermen report before and after fishing activities to designated checking stations.

Prohibited

- To fish for, take or possess any rainbow trout except as described in permitted activities above.
- To use any form of corn for bait.
- To possess spears, chemicals, trotlines, nets (except as indicated in permitted activities above) or other illegal fishing gear.
- To enter into or fish in the prohibited fishing zone along a portion of Kokee Stream and its tributaries above Camp Sloggett, or any other area which may be posted as a prohibited fishing zone.
- To damage or mutilate any private or public property, or contaminate or pollute any stream, ditch, spring, water hole or reservoir.
- To operate any vehicle in any fishing area except on roads for vehicular use, or use any aircraft to gain access for fishing purposes.

MAUI



Molokini Shoal Marine Life Conservation District

Location: The Molokini Shoal Marine Life Conservation District is located offshore of Molokini Shoal, about three miles from the southwestern coast of Maui. "Subzone A" includes the waters and submerged lands within the crater bounded seaward by a straight line from the end of the submerged ridge extending off Lalilali Point to Pahee O Lono Point. "Subzone B" includes the waters and submerged lands 100 yards seaward of Molokini Shoal and Subzone A as shown.

Permitted

- To fish for, take or possess any finfish by trolling in Subzone B only.
- To possess in the water any knife and any shark billy, bang stick, powerhead or carbon dioxide injector.
- With a permit to engage in activities otherwise prohibited by law for scientific, propagation or other purposes.
- To engage in commercial activities, excluding the taking of marine life, with a permit.

Prohibited

- To fish for, take or injure any marine life (including eggs), or possess in the water any device that may be used for the taking of marine life, except as indicated in permitted activities above.
- To take or alter any sand, coral or other geological feature or specimen, or possess in the water any device that may be used for the taking or altering of a geological feature or specimen.
- To feed or deliberately introduce any food material, substance or attractant directly to or in the vicinity of any aquatic organism by any means or for any purpose except for trolling in Subzone B.
- To moor boats for commercial activities, except as provided for by a permit.
- To anchor boats when a day use mooring system is established by the Department.

Honolua-Mokuleia Bay Marine Life Conservation District

Location: The Honolua-Mokuleia Bay Marine Life Conservation District is located along the northwestern coast of Maui, bounded sea-



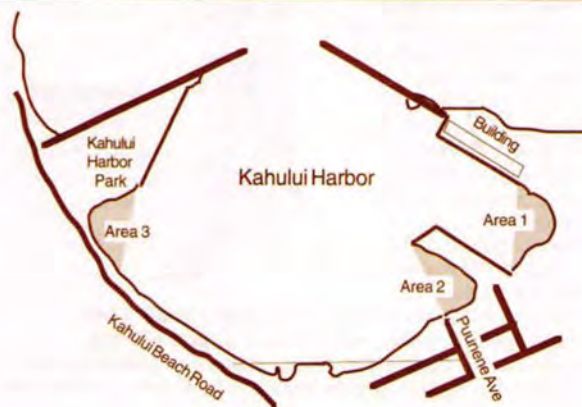
ward by a line from Alaelae Point to Kalaepi Point, then to the point at the northwestern corner of Honolua Bay as shown.

Permitted

- To possess aboard any boat or watercraft any legal fishing gear and fish or other aquatic life taken outside of the District.
- To possess in the water any knife and any shark billy, bang stick, powerhead or carbon dioxide injector.
- With a permit, to bag and remove akule netted outside of the District provided the net is moved only over the sandy bottom areas of the District, and to engage in activities otherwise prohibited by law for scientific, propagation or other purposes.

Prohibited

- To fish for, take or injure any marine life (including eggs), or possess in the water any device that may be used for the taking of marine life, except as indicated in permitted activities above.
- To take or alter any sand, coral or other geological feature or specimen, or possess in the water any device that may be used for the taking or altering of a geological feature or specimen.



Kahului Harbor

Location: Kahului Harbor is the primary port on the northern coast of Maui. Area 1 is located between Piers 1 and 2, seaward boundary a line from the base of Pier 2 to the southernmost corner of the building on Pier 1. Area 2 is located between Pier 2 and Puunene Avenue extension, seaward boundary a line from the northwestern corner of

Pier 2 to the shoreline at the Puunene Avenue extension. Area 3 fronts the boat launching ramp at Kahului Harbor Park, seaward boundary a line following the northern portion of the eastern shoreline of the Park, to the shoreline along Kahului Beach Road. Permitted activities shall not be construed as allowing activities within any portion of the harbor which may otherwise be prohibited by laws or rules of the Department of Transportation.

Permitted (in Areas 1, 2, and 3)

- To use crab nets, and hand nets for shrimp.
- Commercial Marine licensees with a Bait License may take bait-fishes.
- Licensed pond owners or operators may take young mullet (pua) for stocking their fishpond.

Prohibited

- To use any type of net except as described in permitted activities above.

MOLOKAI

Kaunakakai Harbor

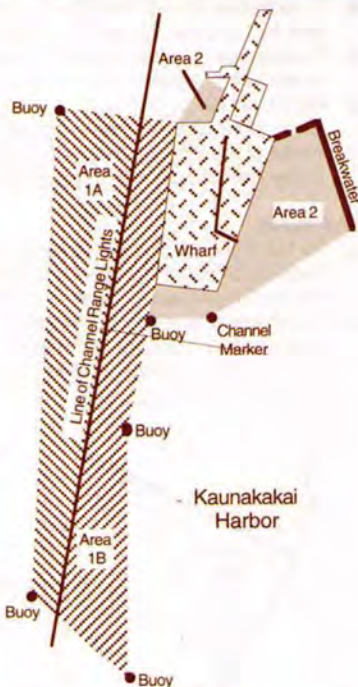
Location: Kaunakakai Harbor is located on the southern coast of the island of Molokai. As shown in the map at right, portions of the commercial harbor designated "Area 1A" and "Area 1B" are separated by a line extending from the Channel Range Lights, and portions of the small craft harbor are designated "Area 2".

Permitted

- Within Area 1A, fishing with thrownet or pole and line; taking baitfish in season, with a bait license; and fishing with nets a) with a permit from the Board of Land and Natural Resources, b) with clearance from the Department of Transportation, and c) except at night when nets may not be set, nor remain in the water unless to complete unloading fish.
- Within Area 1B, fishing with thrownet or pole and line.
- Within Area 2, fishing with pole and line; using hand nets no longer than 3 feet in any dimension to take shrimp or land fish already hooked.

Prohibited

- Within Area 1A, using nets except as described above; obstructing passage of vessels.
- Within Area 1B, using any type of net except thrownet.
- Within Area 2, using any type of net, except hand nets as described above.



LANAI



Manele-Hulopoe Marine Life Conservation District

Location: The Manele-Hulopoe Marine Life Conservation District is located in the waters offshore of Palawai and Kamao on the southwestern coast of Lanai. Subzone A refers to the area bounded seaward by a line from Kaluakoi Point to Flat Rock, then to Puu Pehe Rock. Subzone B refers to the area bounded seaward by a line from Puu Pehe Rock to Kalaekahano Point. The Division of Boating and Ocean Recreation has established rules relating to boating, anchoring and mooring within the Manele-Hulopoe Marine Life Conservation District, as indicated.

Permitted

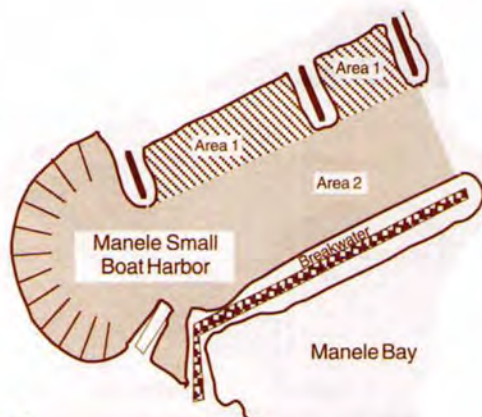
- To fish for, take or possess any finfish or crustacean by hook-and-line from the shoreline within Subzone A, and by any legal fishing method except spear, trap and net other than thrownet within Subzone B.
- To possess in the water any knife and any shark billy, bang stick, powerhead or carbon dioxide injector for personal safety purposes only.
- With a permit to engage in activities otherwise prohibited by law for scientific, propagation or other purposes.

Prohibited

- To fish for, take or injure any marine life (including eggs), except as indicated in permitted activities above.
- To take or alter any sand, coral or other geological feature or specimen.
- To operate, anchor or moor any vessel within Subzone A. (Manually-propelled Hawaiian outrigger canoes may be operated, but not anchored or moored, in the Subzone.)
- To operate, anchor or moor a vessel in such a way as to damage marine life or geological features anywhere in the MLCD.

Manele Harbor

Location: Manele Harbor is a small boat harbor on the southern coast of Lanai. Area 1 refers to the shoreline portion of the entrance channel and basin, bounded seaward by a line connecting the seaward tip of the three groins along the shoreline. Area 2 refers to the breakwater portion of the entrance channel. Permitted activities should not be construed as allowing activities within any portion of the harbor which may otherwise be prohibited by laws or rules of the Division of Boating and Ocean Recreation.



Permitted

- To use thrownets of legal mesh in Area 1.
- To use crab nets and hand nets for shrimp within Areas 1 and 2.
- Commercial Marine licensees with a Bait License may take bait-fishes.

Prohibited

- To use any type of net within Areas 1 and 2 except as indicated in permitted activities above.

OTHER PROTECTED/MANAGEMENT AREAS



Kaho'olawe Island Reserve

Location: Kaho'olawe Island Reserve includes the island of Kaho'olawe and surrounding waters seaward to a distance of two miles.

DANGER: The Reserve is a former military range, and unexploded ordnance is present on the island and in surrounding waters.

Permitted:

- Cultural, spiritual, subsistence, preservation, restoration, educational, and fishing activities specifically authorized by the Kaho'olawe Island Reserve Commission.

Prohibited:

- All entrance into and activities within the Kaho'olawe Island Reserve, including all manner of boating, fishing, and diving, unless specifically authorized by the Commission.

Contact the Kaho'olawe Island Reserve Commission at 587-0761 (Oahu) or 243-5889 (Maui) for assistance and further information on permitted activities.



Paiko Lagoon Wildlife Sanctuary - Oahu

Location: The Paiko Lagoon Wildlife Sanctuary includes all of the State owned land areas adjacent to Paiko Lagoon, and water areas within Paiko Lagoon.

Prohibited:

- To remove, disturb, injure, kill or possess any form of plant or wildlife (no fishing).
- To introduce any form of plant or wildlife.

For further restrictions see Hawaii Administrative Rules 13-125.



Ahihi-Kinai Natural Area Reserve - Maui

Location: Ahihi-Kinai shore waters include the waters seaward of Cape Kinai a distance of 2000 to 3000 feet as shown above.

Prohibited:

- To remove, injure or kill any form of plant or animal (no fishing).
- To introduce any form of plant or animal life.
- To operate, anchor or moor any motorized vessel.

For further restrictions see Hawaii Administrative Rules 13-209 and 13-244-32.

Fishing and other activities may be restricted in other areas of the State under the jurisdiction of other divisions of the Department of Land and Natural Resources and other governmental agencies. Some of these areas include:

Department of Land and Natural Resources - Waimanu Estuarine Sanctuary, Hawaii; Alakai Wilderness Preserve, Kauai; Kanaha Pond Wildlife Sanctuary, Maui; Hawaii State Seabird Sanctuary (various statewide islands and islets); Small boat harbor facilities.

Department of Transportation - Commercial harbor facilities.

U.S. Fish and Wildlife Service - National Wildlife Refuge areas.

GEAR RESTRICTIONS

Thrownets

- Minimum size 2 inch stretched mesh.
- Possession of thrownets with mesh size less than 2 inches in or near the water where fish may be taken is unlawful.
- Unlawful to sell thrownets with mesh size less than 2 inches.

Gill, lay, draw, drag or seine, or other nets

- Minimum size for stationary monofilament gill nets 2-3/4 inch stretched mesh. Minimum size for other nets 2 inch stretched mesh.
- Unlawful to leave any gill net unattended without visually inspecting the net every two hours and releasing or removing any undersized, illegal or unwanted catch.
- Unlawful to leave any gill net in the water for a period of more than four hours in any twenty-four hour period.

Exceptions

- All persons may use hand nets or scoop nets of smaller mesh to take fish and other marine life for noncommercial purposes only, provided the net, including handle and other attachments, does not exceed three feet in any dimension.
- Licensed pond owners or operators may use nets of smaller mesh to take young mullet (pua) to stock their ponds.
- Commercial Marine licensees with a Bait License may use nets of smaller mesh to take baitfish.
- All persons may use nets of smaller mesh to take shrimp (opae), opelu, and makiawa.
- All persons using surround nets with SCUBA may use nets of not less than one and one-half inches to bag and transport fish captured with legal gear to the shore or boat.
- See provisions relating to the taking of akule (halalu) and nehu and other baitfish, and provisions affecting particular areas.

Drift nets

- Possession or use of drift gill nets prohibited in State waters.

Traps

- Minimum mesh size: Netting - stretched mesh 2 inches; Rigid material - 2 inches by 1 inch. Entrance cones for traps have no minimum mesh size.
- Traps for shrimp and opae have no minimum mesh size.
- Traps must be portable and not exceed 10 feet in length or 6 feet in height or width.
- Usually traps are prohibited where gill nets are prohibited.

Aquarium purposes

- Any person with facilities for keeping live fish in reasonably good health may apply for an Aquarium Fish Permit to legally use fine mesh traps or nets (other than thrownets) for taking certain aquatic life.
- Noncommercial aquarium fish collectors are limited to a combined total of 5 fish or aquatic life specimens per person per day.

Bullpen traps

- Total length of a "bullpen" trap may not exceed 2,000 feet (including the length of the guide(s) and pen), and total soak time may not exceed 16 hours. Bullpen traps must be set more than 1,000 yards from shore, except on Molokai where they may be set beyond 500 yards from shore west of Kaunakakai Wharf, and beyond 200 yards from shore east of Kaunakakai Wharf.

Unlawful to discard or otherwise dispose of any fishing net, trap, or gear, or parts thereof, in the waters of the State.

Firearms and spears

- Fishing with spears allowed for all fishes, but must follow minimum size for spearing of certain species, closed seasons and other restrictions. Unlawful to spear any crustacean (except introduced freshwater prawn), turtle or aquatic mammal at any time.
- Unlawful to pursue, take or kill any fish, crustacean, mollusk, turtle, or marine mammal with firearms, except tuna and billfish that have been gaffed, and sharks.

Explosives, electro-fishing devices, chemicals, poisons and intoxicants

- Unlawful to fish with, attempt with, or to have in possession on or near the shore where fish can be taken.
- Permits may be issued for certain legitimate purposes.

SPECIAL PROVISIONS, LICENSES, PERMITS

Closed Season License (lobster and Kona crab)

- During the closed season, a dealer may sell, or a hotel or other public eating establishment may serve spiny lobster, slipper lobster, or Kona crab lawfully caught in the waters of the State during the open season by first obtaining an appropriate Special Marine Animal or Product Possession and Sale License. Also, see special provisions applicable to commercial fishing in the Northwestern Hawaiian Islands, and to imported marine life. License fee \$50. Duplicate \$10.

Baitfish License

- Commercial fishermen may apply for a license to take baitfish other than nehu for use in fishing operations where fish are caught and landed in the State. No baitfish caught may be sold or transferred except for bait purposes. License fee \$50. Duplicate \$10.
- A license for taking nehu may be issued to persons employed on live-bait tuna boats, only if the person's principal means of livelihood is derived from tuna fishing and the sale of tuna, and the fish are caught and landed in the State; such nehu may not be sold to others.
- Each license shall cover the operation of one fishing vessel, and must be carried aboard the boat at all times. Each licensee must furnish monthly baitfish catch reports to the Department of Land and Natural Resources.

Imported marine life

- Unlawful to possess, sell or offer for sale any aquatic life or product thereof of any size taken outside the waters of the State, when the taking, possession or sale of the same species is restricted if taken within the waters of the State, without first obtaining an appropriate Special Marine Animal or Product Possession and Sale License. License fee \$50. Dup. \$10.

Scientific, educational or propagation purposes

- Any person with a bona fide scientific, educational or propagation purpose may apply in writing to obtain a Scientific Collecting Permit to legally take certain aquatic life, use certain gear, and gain entrance into certain areas otherwise prohibited.

Freshwater game fishing

- Unlawful to fish for, catch or take any freshwater game fish without first obtaining a Freshwater Game Fishing License. License

fee \$5 (residents over 15 years of age, military personnel on active duty in the State and their spouse and dependents over 15 years of age); \$3 (all minors between nine and 15 years of age); no charge (all senior citizens 65 years of age or over); \$25 (non-resident); \$10 (7-day tourist), and \$20 (30-day tourist). Minors below nine years of age may fish without a license when accompanied by a licensee. Duplicate \$1.

- Where bag limits are specified, each licensee may take only one bag per day. The catch of a child below nine years of age will be considered part of the catch of the licensed supervising adult accompanying the child. A child who wishes to take a bag limit on his/her own must purchase a valid freshwater fishing license.
- Unlawful to sell introduced freshwater game fish.

Fisherman harassment

- Unlawful to prevent or attempt to prevent the lawful taking of fish by licensed freshwater anglers, including by means of affecting behavior of fish, affecting personal property for fishing, or obstructing access to fishing areas.
- Unlawful to enter or remain on public lands or waters, or private lands or waters without landowner's permission, for this purpose.

RELEASE OF NON-NATIVE AQUATIC LIFE

- No person shall release any live non-native fish or other live non-native aquatic life into any waters of the State.

LOGLINE FISHING

- **Defined:** Longline fishing is conducted with gear consisting of at least one mainline over one nautical mile in length, to which is attached a number of branchlines with baited hooks. The mainline is suspended below the surface by floatlines attached to surface floats.
- Unlawful to engage in longline fishing within state waters, or sell or offer for sale any marine life taken with longline fishing gear within state waters.
- Unlawful to possess, sell or offer for sale any marine life taken by longline fishing gear which is prohibited by or in violation of rules adopted by the Western Pacific Fishery Management Council through the National Oceanic and Atmospheric Administration.

COMMERCIAL FISHING

- Individuals or vessels engaged in taking, selling or offering for sale any marine life for commercial purposes (including charter fishing services) must obtain a Commercial Marine License. License fee \$50 (resident) and \$200 (nonresident). Dup. \$10.
- "Commercial purpose" means the taking of marine life for profit or gain, or as a means of livelihood, when the marine life is taken in or outside of the State, and when the marine life is sold, offered for sale, landed, or transported for sale anywhere in the State.
- Every commercial marine licensee shall furnish to the Department of Land and Natural Resources a monthly report with respect to marine life taken and any bait used. The report shall be submitted not later than the tenth day of the month following the month in which the marine life was taken. Failure or refusal to submit a monthly catch report shall be cause for revocation of the commercial marine license. Violators are also subject to fines of \$25 to \$500, and/or imprisonment of five to thirty days.

BOTTOM FISHING

Bottomfish species covered by these rules include: 'Ula'ula koa'e or onaga (*Etelis coruscans*); 'Ula'ula or ehu (*Etelis carbunculus*); Kalekale (*Pristipomoides sieboldii*); 'Opakapaka (*Pristipomoides filamentosus*); 'Ukikiki or gindai (*Pristipomoides zonatus*); Hāpu'u (*Epinephelus quernus*); and Lehi (*Aphareus rutilans*)

Gear restrictions

Unlawful to take bottomfish with any trap, trawl, bottomfish longline or net. Scoop nets may be used to bring on board a vessel any bottomfish that has already been caught. Unlawful to possess, while on board a vessel, both bottomfish and any trap, trawl, bottomfish longline, or net other than scoop net.

Non-commercial bag limits

Unlawful for any person without a current commercial marine license to take or possess more than a total of five onaga, ehu, or combination of both.

Bottomfish restricted fishing areas

Unlawful for any person to take or possess bottomfish while in a vessel that is drifting or anchored within any bottomfish restricted fishing area as indicated on this map, except in times of emergency.

Bottomfish fishing vessel identification number

Unlawful for any person to take or possess bottomfish while on a vessel without registering the vessel with the Department of Land and Natural Resources (DLNR) and obtaining a bottomfish fishing vessel identification number.

- If a vessel has an HA number or NMFS Federal fishing permit number that is current and properly displayed, the letters "BF" must be added about amidships, either on the sides of the hull or the superstructure. Letters must be no less than six inches high and three inches wide in black or a contrasting solid color to the background.
- If a vessel has a US Coast Guard documentation number but is not a Federal fishing permittee, the documentation number must be displayed on the sides of the hull or superstructure, followed by the letters "BF." Numbers and letters must be no less than six inches high and three inches wide in black or a contrasting solid color to the background.
- If a vessel has a federal fishing permit number already displayed, add the capital letters "BF" as a suffix. The "BF" letters must be no less than six inches high and three inches wide in black or a contrasting solid color to the background.

Coordinates of bottomfish restricted fishing areas

The boundaries of all areas are defined by coordinates and straight lines connecting the coordinates. The inshore boundary of all areas is defined by straight lines that approximate the 100 fathom isobath. The coordinates are given as latitude and longitude. Where feasible, landmarks are noted. For more details see "Hawai'i Bottomfish Fishing Rules" publication.

Area 1: Niihau

A = 21°49.2' N, 160°8.2' W

B = 21°50.8' N, 160°4.3' W (south of Pueo Pt.)

C = 21°46.8' N, 160°4.3' W

D = 21°45.1' N, 160°8.2' W



Area 2: Kauai, Hanalei-Kilauea Point

A = 22°16.8' N, 159°31.0' W
 B = 22°16.0' N, 159°24.1' W
 C = 22°15.1' N, 159°24.1' W (north of Kilauea lighthouse)
 D = 22°15.0' N, 159°25.6' W
 E = 22°15.1' N, 159°27.6' W
 F = 22°15.6' N, 159°28.2' W
 G = 22°15.4' N, 159°29.1' W
 H = 22°15.9' N, 159°29.8' W
 I = 22°15.8' N, 159°30.8' W
 J = 22°15.3' N, 159°31.0' W (north of Makahoa Pt.)

Area 3: Kauai, Makahuena Point to S. Kawai Pt.

A = 21°54.8' N, 159°21.0' W (south of Kawai Pt.)
 B = 21°54.8' N, 159°20.0' W
 C = 21°51.4' N, 159°22.1' W
 D = 21°50.0' N, 159°26.4' W
 E = 21°51.0' N, 159°26.4' W (south of Makahuena Pt.)
 F = 21°51.3' N, 159°25.6' W
 G = 21°51.6' N, 159°25.4' W
 H = 21°52.0' N, 159°24.4' W
 I = 21°51.7' N, 159°23.5' W
 J = 21°52.1' N, 159°22.6' W
 K = 21°52.8' N, 159°22.4' W
 L = 21°53.9' N, 159°21.3' W

Area 4: Oahu, Kaena Point to Makua

A = 21°34.8' N, 158°21.6' W (west of Kaena Pt.)
 B = 21°34.2' N, 158°20.1' W
 C = 21°33.4' N, 158°19.4' W
 D = 21°32.9' N, 158°18.6' W
 E = 21°31.3' N, 158°18.6' W (west of Ohiki-lolo)
 F = 21°33.3' N, 158°21.6' W

Area 5: Oahu, Kaneohe Bay

A = 21°30.7' N, 157°44.7' W (almost in line with Sampan Channel)
 B = 21°30.7' N, 157°41.3' W
 C = 21°29.2' N, 157°41.3' W
 D = 21°29.2' N, 157°42.1' W
 E = 21°29.6' N, 157°43.6' W
 F = 21°29.5' N, 157°44.7' W

Area 6: Oahu, Makapuu Point

A = 21°21.3' N, 157°37.1' W
 B = 21°19.8' N, 157°33.9' W
 C = 21°18.8' N, 157°33.9' W
 D = 21°20.3' N, 157°37.1' W (west of FAD "NN" location)

Area 7: Oahu, Maunalua Bay

A = 21°14.6' N, 157°44.8' W
 B = 21°14.8' N, 157°44.0' W
 C = 21°14.5' N, 157°43.6' W
 D = 21°14.1' N, 157°43.6' W
 E = 21°13.8' N, 157°43.3' W
 F = 21°13.0' N, 157°43.3' W
 G = 21°13.8' N, 157°44.8' W

Area 8: Oahu, Barbers Point

A = 21°16.1' N, 158°06.6' W
 (south of Barbers Point light)
 B = 21°15.4' N, 158°04.8' W
 C = 21°15.3' N, 158°04.0' W
 D = 21°14.4' N, 158°03.0' W
 E = 21°13.6' N, 158°03.0' W
 F = 21°15.0' N, 158°06.6' W

Area 9: Penguin Bank, pinnacle

A = 21°02.9' N, 157°47.0' W
 B = 21°02.9' N, 157°41.7' W
 C = 20°59.0' N, 157°44.0' W
 D = 20°59.0' N, 157°47.0' W

Area 10: Penguin Bank, Third Finger

A = 20°57.0' N, 157°33.2' W
 B = 20°57.9' N, 157°27.4' W
 C = 20°54.5' N, 157°27.4' W
 D = 20°54.5' N, 157°33.2' W

Area 11: Molokai, Ilio Point to Panalaia Point

A = 21°19.4' N, 157°15.3' W
 B = 21°15.8' N, 157°03.6' W
 C = 21°13.3' N, 157°03.6' W
 D = 21°15.4' N, 157°09.6' W
 E = 21°15.8' N, 157°13.3' W
 F = 21°16.8' N, 157°15.3' W (north of Ilio Point)

Area 12: Kalohi/Pailolo Channels

A = 21°01.8' N, 156°50.8' W (south of Kalaula Hbr.)
 B = 20°57.7' N, 156°45.3' W

C = 20°56.4' N, 156°45.7' W (west of Kaanapali)
 D = 20°56.2' N, 156°48.0' W
 E = 20°59.3' N, 156°50.9' W
 F = 20°58.0' N, 156°53.0' W
 G = 20°58.4' N, 156°54.2' W
 H = 21°00.3' N, 156°53.4' W

Area 13: Maui, Makawana Point to Pauwela Point

A = 21°03.1' N, 156°30.8' W
 B = 21°03.1' N, 156°18.0' W
 C = 21°00.8' N, 156°18.0' W
 D = 21°00.5' N, 156°20.5' W
 E = 21°01.0' N, 156°22.8' W
 F = 21°00.8' N, 156°28.8' W
 G = 21°01.7' N, 156°30.8' W

Area 14: Maui, Kaupo to Kaapahu Bay

A = 20°36.2' N, 156°07.5' W (south of Kaupo)
 B = 20°36.4' N, 156°06.5' W
 C = 20°37.3' N, 156°05.9' W
 D = 20°37.4' N, 156°04.7' W (south of Lelekea Bay)
 E = 20°35.5' N, 156°04.7' W
 F = 20°34.2' N, 156°07.5' W

Area 15 (Deleted)

Area 16: Hawaii, Kiholo Bay to Puako

A = 20°00.0' N, 155°55.2' W
 B = 20°00.0' N, 155°52.4' W
 C = 19°59.2' N, 155°53.0' W
 D = 19°58.1' N, 155°55.8' W
 E = 19°53.8' N, 156°00.0' W
 F = 19°56.3' N, 156°00.0' W

Area 17: Hawaii, Hakalau to Onomea Bay

A = 19°54.5' N, 155°05.7' W
 B = 19°54.5' N, 155°02.3' W
 C = 19°49.4' N, 155°00.0' W
 D = 19°49.4' N, 155°03.4' W
 E = 19°51.0' N, 155°03.3' W (off Pepeekeo Pt.)
 F = 19°52.7' N, 155°04.0' W

Area 18: Hawaii, Leleiwi Point to Kaloli Point

A = 19°44.1' N, 154°58.3' W (east of Leleiwi Pt.)
 B = 19°44.1' N, 154°55.4' W
 C = 19°37.4' N, 154°53.0' W (near FAD "QQ" location)
 D = 19°37.4' N, 154°56.2' W (east of Kaloli Pt.)
 E = 19°42.8' N, 154°58.3' W

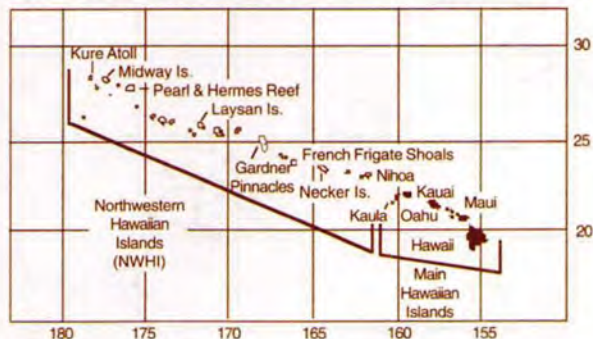
Area 19: Hawaii, Ka Lae

A = 19°00.0' N, 155°47.8' W (Pohue Bay)
 B = 18°58.7' N, 155°47.8' W (inside boundary follows 100 fm line)
 C = 18°55.5' N, 155°42.3' W
 D = 18°50.1' N, 155°42.4' W
 E = 18°50.1' N, 155°41.0' W (south of Ka Lae lighthouse)

Area 20: Hawaii, Palemano Point to Alika

A = 19°27.5' N, 155°56.3' W (west of Palemano Pt, south of Kealahakua Bay)
 B = 19°27.5' N, 155°57.4' W (inside boundary follows 100 fm line)
 C = 19°13.8' N, 155°54.3' W
 D = 19°13.8' N, 155°55.8' W (west of lava flow)

NORTHWESTERN HAWAIIAN ISLANDS (NWHI)



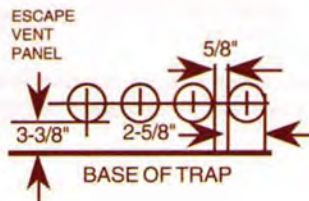
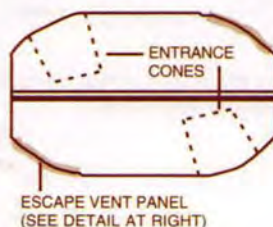
Location: "Northwestern Hawaiian Islands" means those islands, reefs and shoals, as well as their respective appurtenant reefs and territorial waters of the Hawaiian Islands chain, beginning at and including Nihoa, westward to and including Kure Atoll.

- A Commercial Marine licensee, with a Northwestern Islands Taking Permit, may take, catch, possess, sell or offer for sale certain marine life, or use certain gear in the Northwestern Hawaiian Islands area which may be prohibited or regulated elsewhere in the State for commercial purposes. Permit fee \$50. Dup. \$10.

Provisions for lobster

- *Spiny lobster:* Minimum size tail width two inches.
- *Slipper lobster:* Minimum size tail width 2-3/16 inches.
- Lobsters may not be taken in waters less than ten fathoms in depth, or within twenty miles from Laysan island.
- Lobsters may be taken by trap only; the smallest opening of an entryway may not allow any sphere or cylinder greater than 6-1/2 inches to pass from outside the trap to inside the trap.
- A lobster trap must be equipped with at least two escape vent panels placed on opposite sides of the trap. Each escape vent panel must have four 2-5/8" diameter holes in a horizontal line - 5/8" apart, the lowest point of each hole not more than 3-3/8" from the floor of the trap. (See diagrams below.)
- Hand harvest of lobsters permitted in waters at Kure Atoll.

LOBSTER TRAP



FISH AGGREGATING DEVICES (FADs)



Prohibited

- Unlawful to attach, moor or tie any boat or watercraft, or any rigging or structure to, or to board, deface, damage, remove or destroy any fish aggregating device.

Exceptions

- Permits may be issued for certain activities.

Midwater FADs

- Midwater FADs are positioned near the islands of Oahu, Molokai and Lanai. These FADs are about 60 feet below the surface. For locations, contact the nearest Division of Aquatic Resources (DAR) office.

Catch Reporting

- Information provided by fishermen regarding catches made around surface and midwater FADs is important because it shows whether a FAD is productive. This information affects the replacement of buoys when they become lost.
- The DAR has instituted a program of voluntary catch reporting. Recreational fishermen are asked to report FAD catch information to the DAR on fish buoy cards, which are available from DAR offices, harbors and fishing supply stores.
- Commercial fishermen must report FAD catches on their monthly catch reports.

For current fish aggregating device locations and status contact the nearest office of the Division of Aquatic Resources.

SPORT FISH RESTORATION ACT An Explanation



Whenever you buy a fishing rod, reel, tackle box, lure, fish finder, boat fuel, and many other products, you are helping to finance a number of fisheries programs in Hawaii. This support is in addition to funds provided to the Division of Aquatic Resources (DAR) by the state legislature.

In 1950 the U.S. Congress passed the Federal Aid in Sport Fish Restoration Act, which created a 10 percent excise tax on certain fishing equipment. This money was distributed to the states to improve sport fisheries. Based on the success of the program, and with the support of conservation and angling groups and tackle manufacturers, the Act was amended in 1984 to increase the variety of products to which the tax applied. Additional revenue was generated by a 3 percent excise tax added to fish finders and trolling motors, duties on imported fishing tackle, pleasure boats and yachts, and motorboat fuel taxes for boating and fishing programs. Known as the Wallop-Breaux Amendment, the expanded act provided more funding for sport fishing and boating access.

The DAR currently receives about \$2 million each year for Sport Fish Restoration projects, including the Fish Aggregating Device (FAD) system, artificial reefs, freshwater sportfish hatching and stocking, aquatic education programs, and others. Boaters benefit, since 12.5 percent of the state's apportionment must be spent to develop and maintain boat use facilities.

So when you see the Sport Fish Restoration logo on a publication, at a Public Fishing Area, or anywhere else, remember that your purchase helps improve fishing opportunities for everyone.

CATCH AND RELEASE



To help improve the quality of fishing in Hawaii, fishermen are encouraged to take only what they need from the sea, and release fish safely whenever possible. To enhance survival of released fish, please follow these guidelines.

- Quickly play and release fish.
- Keep fish in water as much as possible.
- Gentle handling is essential.
- Remove hook quickly with pliers, or cut line. Barbless hooks are preferred.
- Revive unconscious fish by holding upright in water and moving back and forth, forcing water over gills.
- Don't hold by eye sockets. Blindness or death may result.

Be selective about the fish you take. Release less numerous species. If you catch an undesirable fish, let it go carefully so it can remain part of the food chain. By fishing wisely, we can maintain a nutritious and renewable resource.

Division of Aquatic Resources Offices

Oahu

1151 Punchbowl St., Rm. 330
Honolulu, HI 96813
587-0100

Hawaii

75 Aupuni St., Rm. 204
Hilo, HI 96720
974-6201

Kauai

3060 Eiwa St., Rm. 306
Lihue, HI 96766
274-3344

Maui

130 Mahalani St.
Wailuku, HI 96793
243-5294

Molokai

Puu Kapeelua Ave.
Hoolehua, HI 96729
567-6696

Do all you can to conserve our aquatic life.

To report violations, call 587-0077 (Oahu)

East Hawaii (Hilo) - 974-6208

West Hawaii (Capt. Cook) - 323-3141

Kauai - 274-3521

Maui - 984-8110

Molokai - 553-5190

Lanai - 565-6688

After hours and on weekends, neighbor islands call toll-free by asking the operator for Enterprise 5469.

Violations are subject to fines ranging from \$100 to \$10,000, and jail sentences of up to one year.

Informer's fee

One half of the fine imposed and collected in cases where the defendant has been convicted for a violation shall be paid to the person giving the information leading to the arrest of the person so convicted.

The Department of Land and Natural Resources receives financial support under the Federal Aid in Sport Fish Restoration and other federal programs. Under Title VI of the Civil Rights Act of 1964, Section 504 of the Rehabilitation Act of 1973, Title II of the Americans with Disabilities Act of 1990, the Age Discrimination Act of 1975, Title IX of the Education Amendments of 1972, and the laws of the State of Hawaii, the U.S. Department of the Interior and the State of Hawaii prohibit discrimination on the basis of race, color, religion, sex, national origin, age, and disability. If you believe that you have been discriminated against in any program, activity or facility, or if you desire information, please write to: Affirmative Action Officer, Personnel Office, Department of Land and Natural Resources, 1151 Punchbowl Street, Rm. 231, Honolulu, HI 96813, or the U.S. Fish & Wildlife Service, Office for Human Resources, 1849 C Street NW, Room 3058, Washington, DC 20240.

